

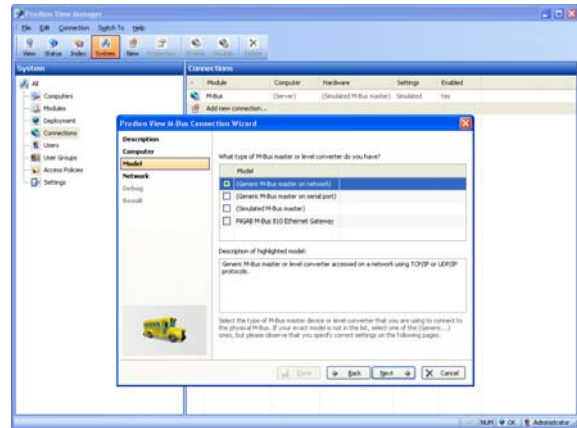
## PRODION Back Engine / Metering Solution

SyxtSense Prodition is a back engine application for retrieving, storing and analysing industrial type data such as production figures, building process data such as temperatures and flow values or energy consumption in buildings. Prodition provides central data repository and device management solution with distributed architecture support for SyxtSense WebBiter web-browser interfaces and SyxtSense metering products.

Prodition is typically used for AMR (automated meter reading) for retrieving meter date automatically with set intervals and storing it to secure SQL database for analysis and further operations such as tenant billing.

Prodition has built-in modules for highly sophisticated alarming and logging of any live value, regardless of the capabilities of the source system. The very advanced modular design of Prodition allows the current core functionality to be expanded in the future with new modules without the need for reinstalling the software package or converting databases.

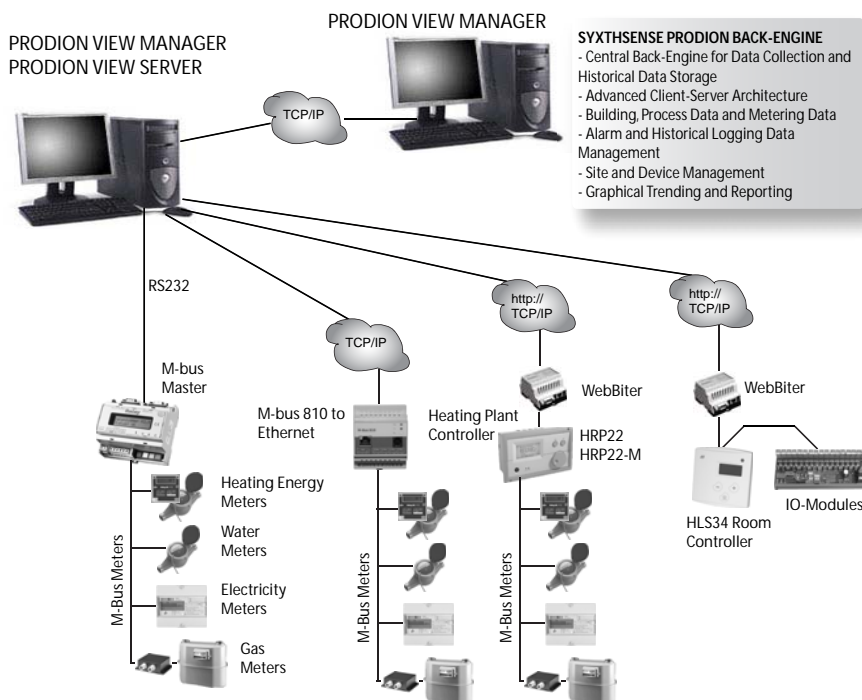
Prodition is designed as a client/server solution with distributed data acquisition to a central Microsoft SQL Server database. For small and mid-size applications, the Prodition package includes the free Microsoft® SQL Server™ 2005 Express edition



### Features

- Central Data Repository for building and industrial process data such as meter readings
- True High Performance Client - Server Architecture using XML and TCP/IP sockets
- Advanced easy to use wizards for configuration
- Very user-friendly interface
- Advanced alarm interface for consumption alarms, system alarms and general alarming purposes
- Historic reporting and Automatic Data Collection
- Automatic Meter Reading (AMR) Support with Safe Storage to SQL
- Data integrity and data management
- Tenant Billing Option
- Templates for commonly used M-bus meter products (minimised configuration)
- Automatic trending data collection from WebBiter Interfaces and WebBiter Device Management
- Single location data back-up and advanced system upgrades (installable modules allow system hot-swap and restore without loss of data)
- Product designed with latest IT standards and with IT friendly technologies
- Support from small to large scale solution
- Installable extension modules - safe software upgrades even large scale systems
- Temporary alarm suppression for maintenance operations
- Transaction logging and advanced user management to the level of CFR Part 11
- Data stored in standard MS SQL format, easily accessible by MS Access, Excel macros or other software products
- Multi-Language Support
- OEM support

## System Architecture



Prodion software has flexible client-server architecture and is suitable for small single PC installation as well as for a large multi PC/server type installation. The Prodion software consist of three main parts; Prodion Manager (Client), Prodion Database Server and Prodion Feeder.

Prodion Manager is the user interface to the Prodion system. Prodion manager is used to configure the system as well as to review the real-time data. The Prodion Manager has been designed to be user friendly and the configuration is carried out through wizards.

Prodion Database Server handles all back-engine actions, it provides automatic data collection, it offers server based alarming and historical logging. The Database server manages the MS SQL server; stores the new data entries and retrieves the data to the Prodion Manager.

Prodion Feeder is typically installed on the Database Server PC. The Prodion Feeder handles the data connection to the physical equipment. Number of different modules have been developed for the data access. Typically built-in M-bus module is used to collect data from M-bus meters through serial port connection or over TCP/IP connection. DDE-module is used to collect process data from any compatible DDE-server. WebBiter Module is used to collect data from distributed WebBiter Sites and manage the WebBiter. In bigger installations the Prodion Feeder may be installed on a remote PC from the Prodion Server.

## Software Features

### DATA LOGGING

Logging of live values to SQL database periodically (1 second - 1 month) or on item value change (fixed value or percent). Disable logging based on the value of another item.

With WebBiter Module historical logging data stored on the WebBiter is automatically stored in the database periodically.

### PRODION SOFTWARE ALARMING

Alarming of live values; multiple alarm bands with different priorities and hysteresis, limits relative to the value of a different item, alarm categorisation and alarm text. Items in alarm are indicated directly in the index tree.

### DEVICE AND SITE MANAGEMENT

Model your physical plant or buildings in a freely definable hierarchy with multiple levels and physical items at any level. Each user can create a personal alternate hierarchy using favourites.

### FEEDER MODULES

DDE module for legacy systems.

Collect and store energy figures retrieved with M-Bus module with built-in M-Bus protocol support (no 3rd party software required).

### TREND VIEWER

Trend viewer with multiple axes, stacked discrete values and "compare with..." time shift function.

**USER MANAGEMENT**

Manage multiple users and their access rights using user groups and access policies for use in FDA CFA 21 part 11 aware industrial applications.

**CLIENT-SERVER ARCHITECTURE SIMPLICITY**

Collect and store production or building data retrieved with OPC Data Access Collect values from multiple computers across different domains with built-in XML communication via HTTP on TCP/IP - no hassle with NetDDE or networked OPC.

**TENANT BILLING**

Tenant Billing module is designed to manage the process of creating invoices for sub-metered tenants.

"Define Tenants & Billing Addresses

"Apply Multiple Meters to Accounts (e.g. Gas Meter, Heat Meter and Electricity Meter)

"Generate Tenant Invoices

"Storage/adjustments of variable tariffs (gas prices etc.)

"Defining the tax rates and optional additional line for administration costs

"Print Invoices

**Software Architecture**

**PRODION SOFTWARE ARCHITECTURE**

